

# IRVINE ACCESS FLOORS

9425 Washington Blvd., Suite Y-WW

Laurel, MD 20723

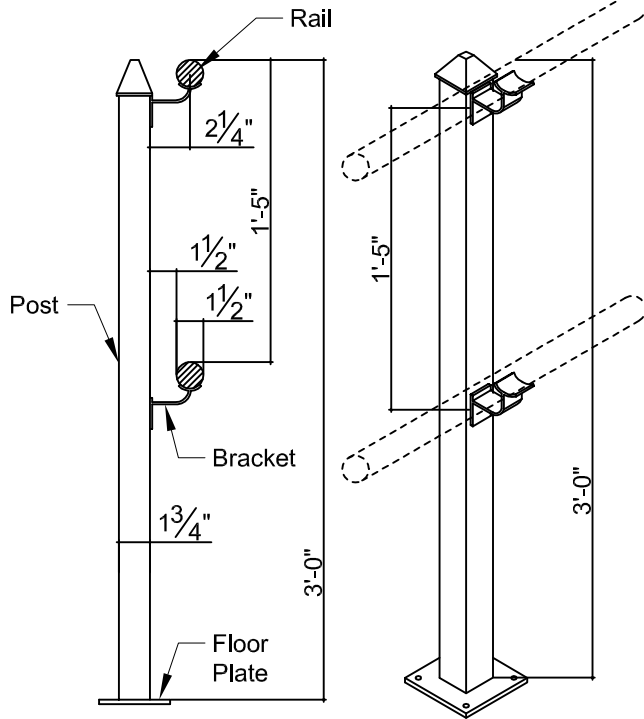
Phone: (301) 617-9333 Fax: (301) 617-9907

www.irvineaccessfloors.com

## GUARDRAIL AND POST ASSEMBLIES

### NOTES:

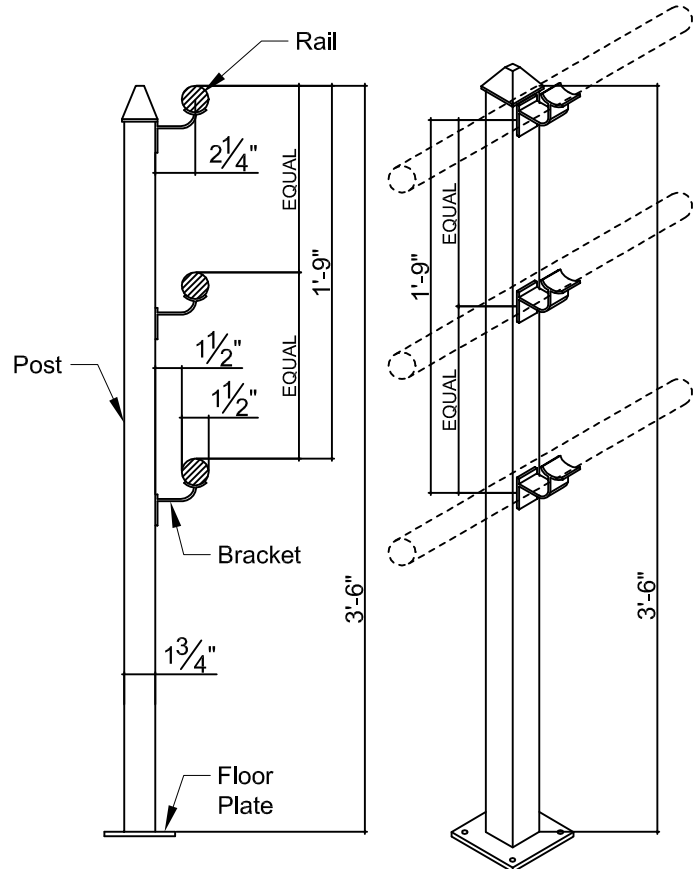
1. Aluminum 6063 - T52
2. Satin Anodized Finish
3. Post Spacing Maximum 4'-0"



ELEVATION VIEW

ISOMETRIC VIEW

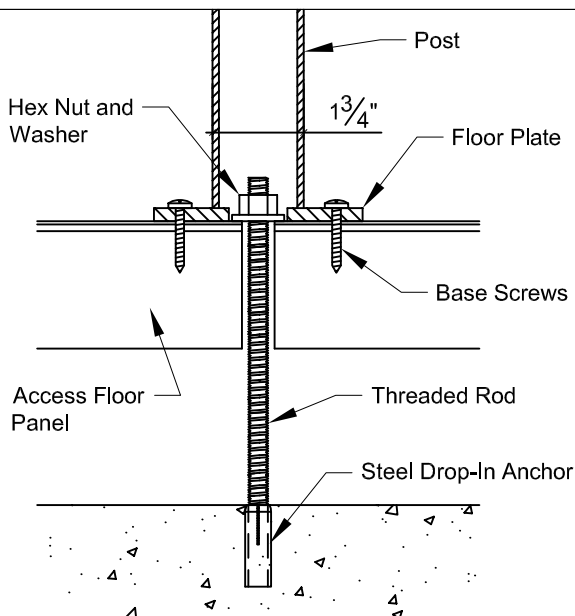
### FLOOR MOUNT STANDARD 2 RAIL POST



ELEVATION VIEW

ISOMETRIC VIEW

### FLOOR MOUNT OPTIONAL 3 RAIL POST



### PANEL FASTENER KIT

- (1) 1/8" x 1" Washer
- (1) 3/8" Hex Nut
- (1) 3/8" Threaded Rod Cut per FFH
- (1) 3/8" - 1/2" x 1 9/16" Steel Drop-In Anchor
- (4) #14 - 10 x 1 1/4" Base Screws

\*\*\*Note: 1 Kit per Post